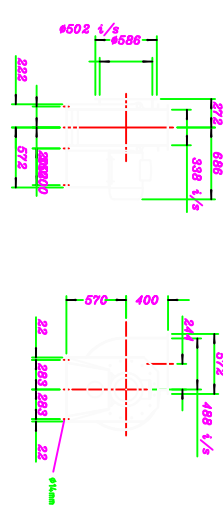


Filter Unit Details
 Specification -
 Filter Reference: F5 DMT 1-4-5
 Filter Area: 5000 sq. ft. (500' x 1000')
 Filter Configuration: Filter and filter housings vertically configured
 Filter Media: Deepbed
 Filter Media Support: 100 mesh down on 100 mesh
 Filter Cleaning System: Air tank mounted at low level with pulse
 dampen valves and blow for automatic controller to 854 spec.
 Compressed Air: 40-50' (100' max) (100' max)
 Dry Air: 100' (100' max) (100' max)
 Dust Collector: Valley Type Hooper section
 Hooper Discharge: Rotary discharge valve (actuated by single hand)
 plastic bag to be secured for waste collection by client
 Support: Steelwork: ISA 8" RSC sections
 Weatherproofing: 3' raised



REV	1	MODIFICATION	2	APPD. DATE	3	4	5	6	7	8	9	10
<p style="text-align: center;">FOUNDRY MACHINERY AND SPARES LTD</p> <p style="text-align: center;">UNIT: H FRENDS CLOSE, BLOXTICE, WALSALL, WEST MIDLANDS, WS3 2XQ TEL: (01922) 493603 FAX: (01922) 718729</p>												

<p style="text-align: center; color: green; font-size: 2em;">DLM 1-6-15 Filter</p>											
<p style="text-align: center;">CLIENT</p>											
ITEM No.	DESCRIPTION.										MATL. QTY.
DRAWN											REV.
DATE											
CHECKED											
SCALE											SHEET OF
Q5424/1											